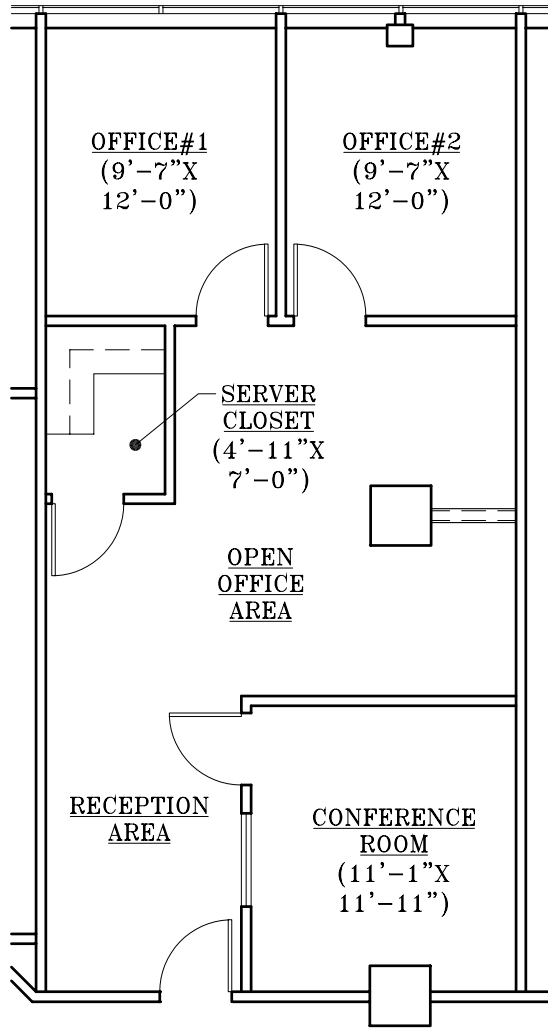


PRESIDENTIAL CENTER

293 EISENHOWER PARKWAY
LIVINGSTON, NEW JERSEY

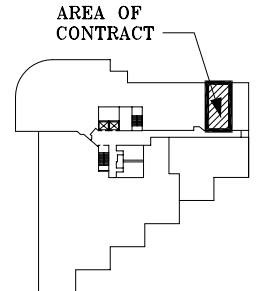
SUITE#: 330 1,010 RENTABLE-SQ.FT.



1 FLOOR PLAN
SCALE: 1/8"=1'-0"

DATE: APRIL 17, 2009

NOTE: ALL ROOM SIZES
ARE APPROXIMATE.



**THIRD FLOOR
KEY PLAN**

▨ DENOTES TENANT SPACE

FILE: N:\Commercial\Presidential Center\Marketing Plans\SUITE#330\MARKETING.dwg
CURRENT DATE: Apr 17, 2009 16:43
LAST SAVED DATE: Apr 17, 2009 16:42



651 WEST MT. PLEASANT AVE.
LIVINGSTON, NJ 07039
TEL: (973) 992-7727
FAX: (973) 992-3084

www.eastmancompanies.com



WEISS DESIGN GROUP
ARCHITECTURE INTERIOR DESIGN

629 WEST MOUNT PLEASANT AVENUE . LIVINGSTON, NEW JERSEY 07039
973.994.9490 Facsimile 973.994.9889
RONALD WEISS, AIA, NCARB NJ Lic. #10001 NY Lic. #021367